

A decorative frame consisting of thick black lines forming an L-shape. One vertical line runs down the left side, and one horizontal line runs across the top. Another vertical line runs down the right side, and another horizontal line runs across the bottom. The lines are positioned to frame the central text.

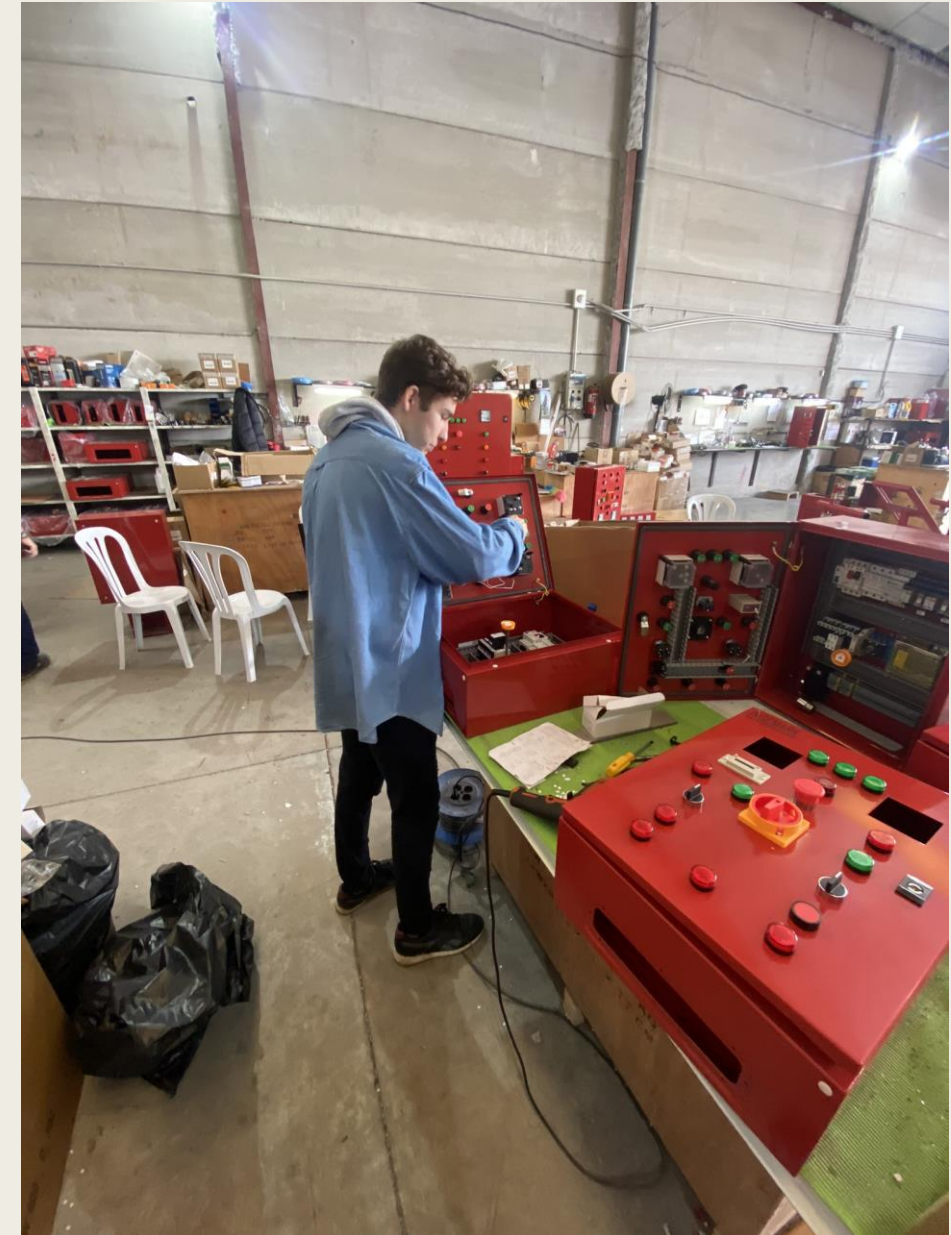
ERAZMUS SEVILLA

Ryan Thompson 4.C SPŠJM 2022/23

Practise



- Me and Boris worked at a company called INGENMARK in a quarter of Sevilla called Camas
- They specialize in making hydraulic machines



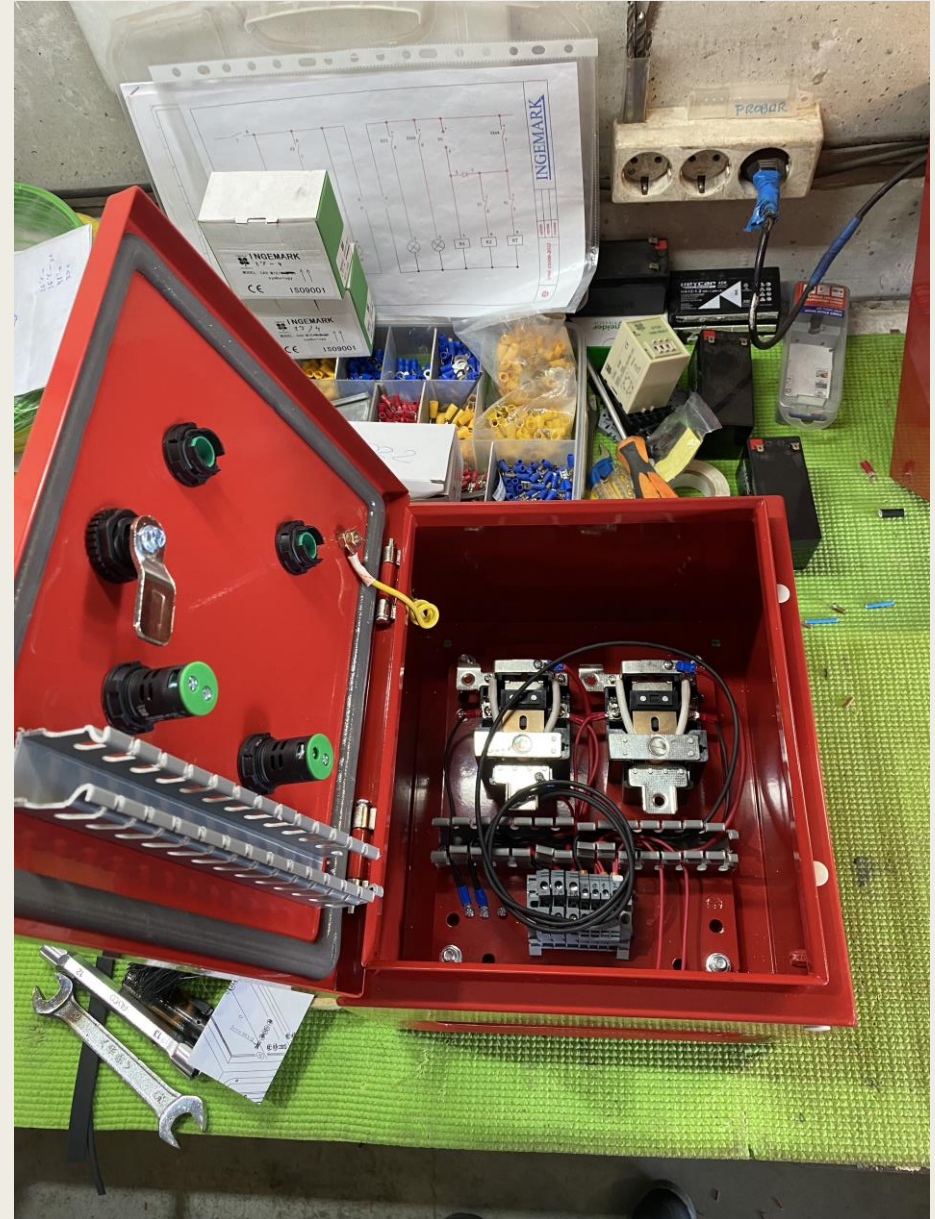
Practise

- We were placed in their electrical department
- Our job was to assemble control panels for the machines



Practise

- We also did some connecting



Spanish lessons

- We had Spanish lessons where we learned basics of the Spanish language
- After the lesson we went sightseeing in Seville and had a few interaction tasks to complete, to use our newly learned communication skills



Trip to Gibraltar

- The first trip we went on was a trip to Gibraltar
- We went up to the top the Rock of Gibraltar by a cablecar and had a beautiful view of the see and Africa
- At the top we saw many monkeys
- We also went to see caves in the rock



Trip to Cádiz

- Our second trip was to Cádiz
- We went to this town because of its old age and history
- The town was beautiful because of its architecture, sea and nice green plants and trees

